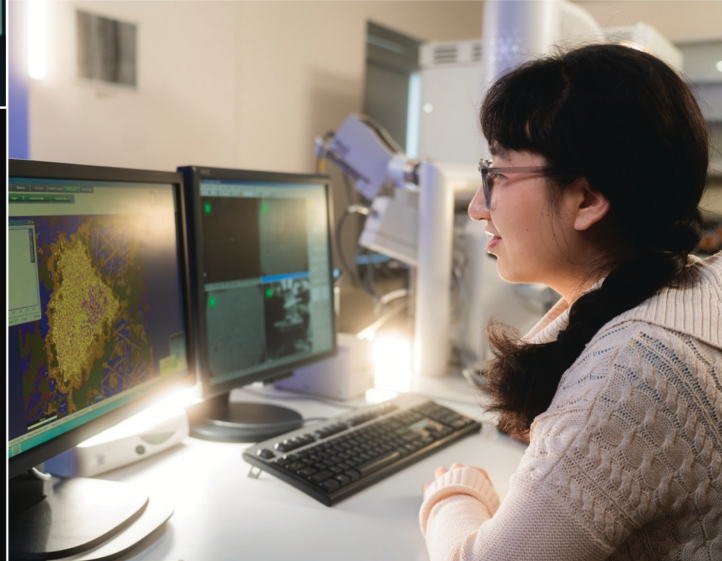
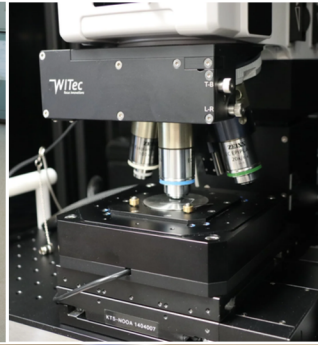


NUCLEUS

A NETWORK OF CORE FACILITIES



AT THE CORE OF WINDSOR-BASED SOLUTIONS.

NUCLEUS is a network of core facilities supporting cutting-edge research and development across Windsor-Essex with advanced instrumentation and high-level scientific expertise.



Science
University of Windsor

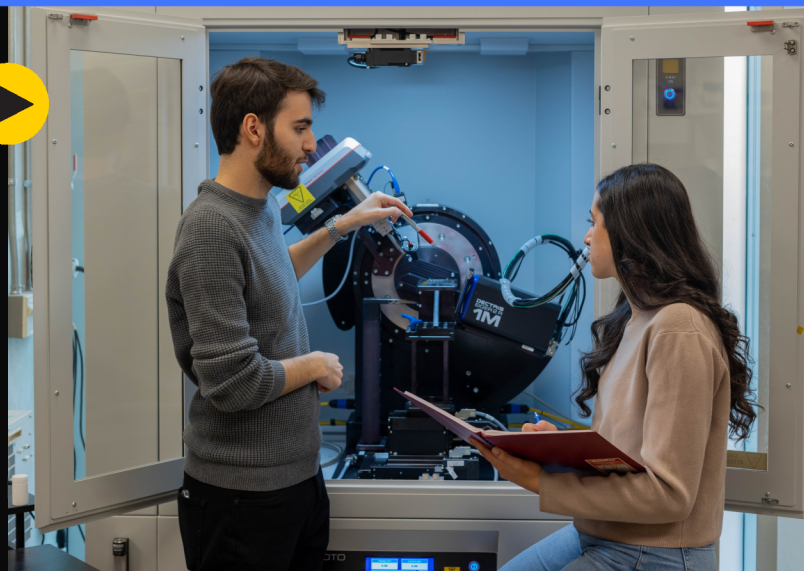


GLIER
GREAT LAKES INSTITUTE FOR
ENVIRONMENTAL RESEARCH
at the University of Windsor

X-ray Scattering Facility



The X-ray Scattering Facility offers diverse services for academic and industry collaborators in materials science. This includes qualitative and quantitative phase analysis, determination of crystal structure, and x-ray diffraction experiments at non-ambient temperature and pressure. Data preparation for publication as well as comprehensive training programs and workshops are also provided.



Centre for Advanced Microscopy & Materials Characterization



The Centre for Advanced Microscopy and Materials Characterization at GLIER (Great Lakes Institute for Environmental Research) has state-of-the-art equipment to meet a variety of microscopy and analytical needs. The facility is staffed by a full-time technician and equipped to examine samples from biological material to chemical applications to materials engineering of all kinds.



Flow Cytometry Facility



The Flow Cytometry Facility is multi-user space that provides access to instrumentation, software, and technical expertise necessary to perform advanced analysis of cell properties. An array of services is offered to both academic and non-academic collaborators for high-quality, cost-effective flow cytometry research. Training, education, and consultation services are available as well.





Environmental Genomics Facility

The Environmental Genomics Facility at GLIER (Great Lakes Institute for Environmental Research) has the capacity to conduct cutting-edge genomics analyses on tissue and environmental samples. The facility has a full-time technician and provides a wide range of services to all users, such as DNA and RNA extraction and quantitation, qPCR, NGS, and the associated sample prep and bioinformatic analysis.



OUR CORE FACILITIES
AT WORK FOR YOU.

Explore More



Science
University of Windsor

we*
spark
HEALTH INSTITUTE



GLIER
GREAT LAKES INSTITUTE FOR
ENVIRONMENTAL RESEARCH
at the University of Windsor

we-nucleus.com